

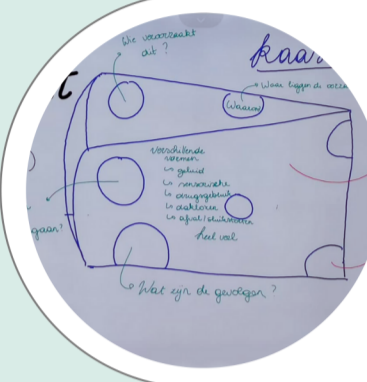
COSMOS @Novaplus in Belgium

STUDENT RESEARCH SCHEDULE

April



1. Introduction list police
2. Walk in the park (neighbourhood)
3. Selection interests students to work on



Visible thinking on case
e.g. cheese with holes, the problem tree, ...

May



- Preparation neighborhood investigations
- Drafting questionnaire
 - Contacting organisations



Neighborhood investigation
with different target groups: homeless people, users of e-bikes, neighbors, city custody, the passers-by in the parc



Presentation shared results
→ overview and understanding of the issues



- In the classroom, students started designing solutions in smaller groups
- Prototyping these ideas

June

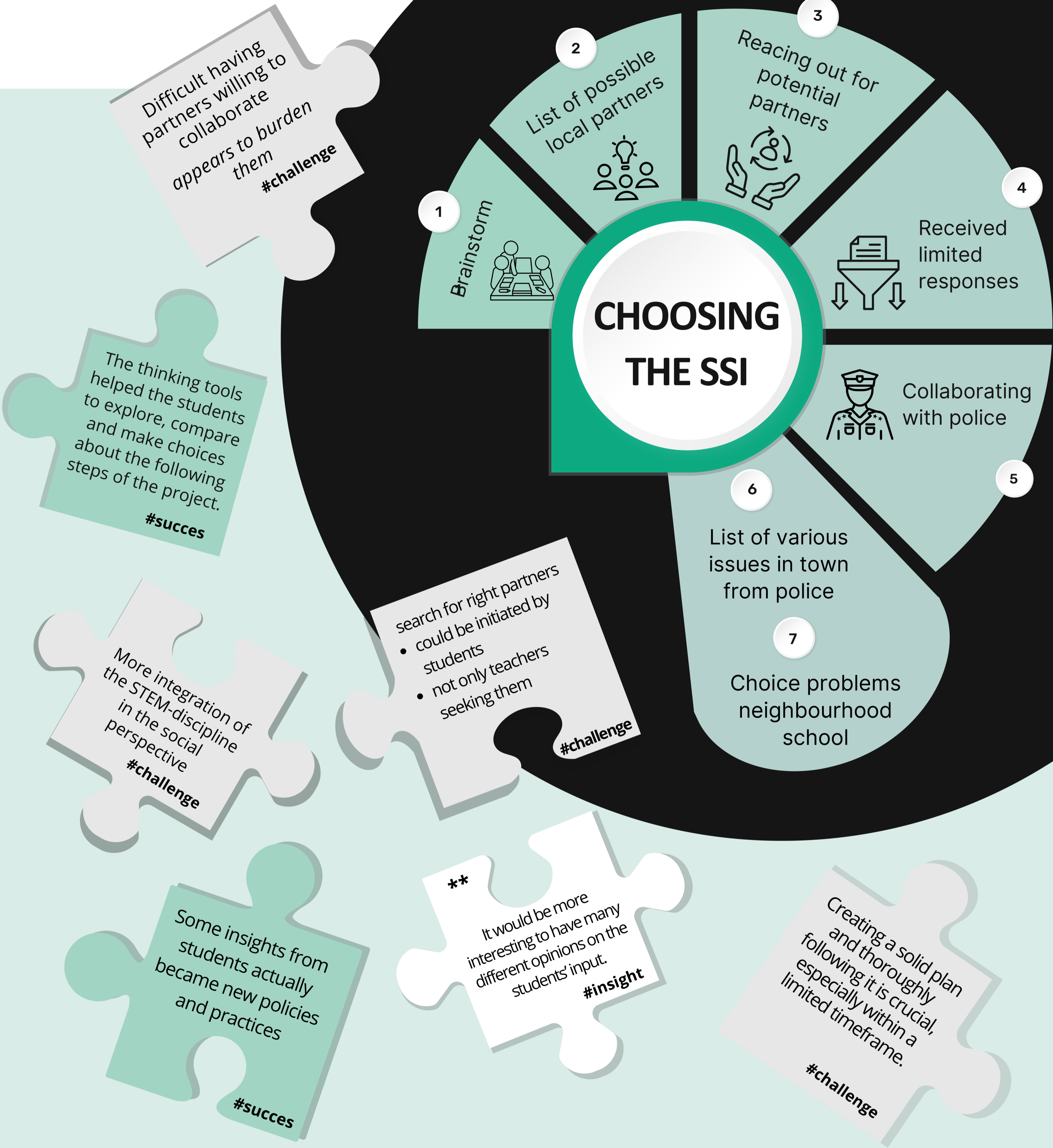


Present solutions to local law enforcement & Officers provided with feedback

ASK

FIND OUT

ACT



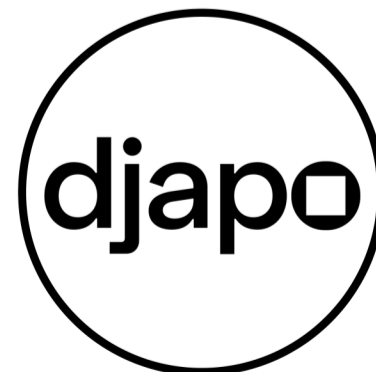
This project received funding from the European Union's Horizon 2020 Research and Innovation programme under grant agreement No 101005982



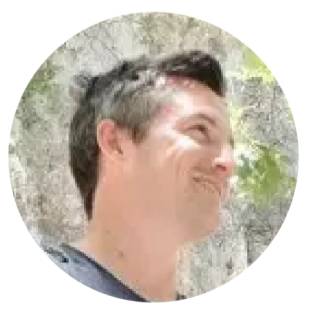
Novaplus
Participating school
Secondary STEM school
Antwerp Belgium



KdG
Partner in CORPOS
University of Applied
Sciences and Arts



Djapo
Partner in CORPOS
Educational organization for
sustainable development



Simon De Smet
Teacher STEM and sciences



Sasja Vieillevoeye
Teacher STEM and math



Stefanie Baeten
Coordinator school policy



Wendy Haepers
Director Novaplus

